

Knowing your S911 Lola



Power Button

Hold down for 3 seconds to turn ON or OFF the unit. GPS and GSM lights will start flashing and the unit will vibrate.

Speaker & Microphone

Used for communication in case of emergency. For best call quality, hold unit within 20cm of face.

GPS & GSM Indicators

These lights will show the connectivity status of GPS and GSM. Low battery is indicated by a red LED flashing light.

Strap Hole

Loop the neck strap through this hole.

Micro USB Port

This port is used to charge and program the unit.

SOS Button & Back Light

To initiate an SOS call, hold down the SOS button for 3 seconds. The backlight will begin to flash and your SOS call will begin.

Getting Started

1. Installing the MicroSim Card



Gently pull the rubber tab at the bottom of the unit to open the Micro SIM card's bay.



Insert the pin into the small hole, pry and pull the Micro SIM card's bay out.



Insert the Micro SIM card into the tray and slide back into the unit. Close the rubber tab and you are READY!

2. Charging the unit



The unit will by default turn ON whenever the USB is plugged in. After plugging in the unit, the user can turn OFF the unit to speed up the process. Full charge can take up to 4 hours. When the battery is low, the GSM LED indicator will flash red.

3. Installing LocationNow suite

Visit this site and download the LocationNow Suite:

<http://www.laipac.com/lolaupdate.htm>



S911 Lola Update

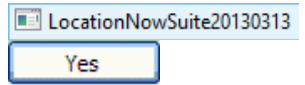
Last update: March 15, 2013

RELEASE	RELEASE DATE	DOWNLOAD FILE
Suite Package		
LocationNow Suite V20130313	March 15, 2013	Download Now
User Manual		
S911 Lola User Manual V1.4	Feb 04, 2013	Download Now
Operator Manual		
S911 Lola Operator Manual V1.2	Nov 14, 2012	Download Now

3. Installing LocationNow Suite

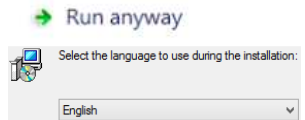


Click on “Download Now” and “Open” the file.



Execute the downloaded file.

Click “Yes” or “Run Anyway” when prompted to continue.



Now select your language and follow the on screen instructions until the installation is complete.

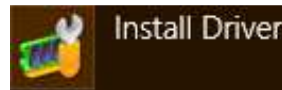


Now you can access LocationNow Suite from your “desktop”.

4. Obtaining the correct drivers and connecting to your PC

When using Windows 7 or higher, your PC will automatically install the necessary drivers. For earlier versions, follow the next steps:

Go to Start -> All Programs -> LocationNow Suite -> right click on “Install Driver” and “Run as Administrator”.



Click on “Install”, and if prompted with the option, click “Install this driver software anyway”.

Please click "Install " button to install driver.

Once the installation is complete, close the window and you are DONE!

Success to install driver. Please close this windows and reset the unit.

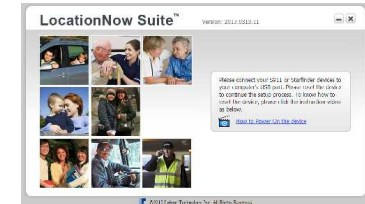
***Important:** The S911 Lola must be turned OFF prior to connecting to your PC. If this step is not followed LocationNow Suite will not recognize the unit as being connected.

Using the LocationNow Suite

1. Connecting S911 Lola to LocationNow Suite



Open the LocationNow Suite from your desktop. Turn OFF the unit, connect to your PC and follow the on screen instructions.



If the unit fails to connect, do not unplug it. You can simply reset it by holding down the “SOS” and “Power” buttons together for 3 seconds.

2. Updating the unit’s firmware

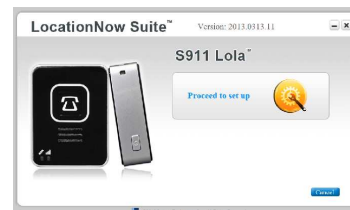


Once the unit is connected, you may be prompted to update the firmware. Click “Yes” and you’ll see the progress bar updating the unit’s firmware.



When the update is completed, you will see the message indicating **Successful** update of the unit. Close LocationNow Suite. Disconnect the unit from the PC and turn it OFF.

3. Setting up the unit and its features



Hold the power button for 3 seconds to power off. Unit will vibrate and all lights will go off, indicating the unit has been shut down correctly. Once the unit is powered OFF, use the USB cable to connect it to your PC. Click on “Proceed to set up” to continue.

5. Setting up the unit and its features



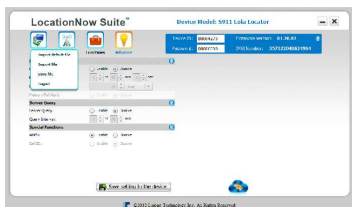
“Networks”. The first step is to input the unit’s assigned ID. Here you will also input the details to connect your unit to the GSM Network and the LocationNow server. You will also set up the “Emergency SOS” number for SOS calls.



“Functions”. You can select how the unit reports: by time interval, distance or both. You can also activate features such as “Over Speed” and “Geo-fence” alert. These features can also be modified via the web based app.



“Advance”. Features like “Data log”, keep track of the unit’s location in the internal memory. “AGPS” allows for quicker GPS fix by slightly increasing the data usage. These advanced settings should only be changed by an experienced user.



“File”. From here you can save your settings and load previous ones by using “Import” and “Export”. It is important to keep a backup of your settings.

“Finished”. Click on “Save setting to device”. Wait for the operation to “Succeed” and disconnect the unit.

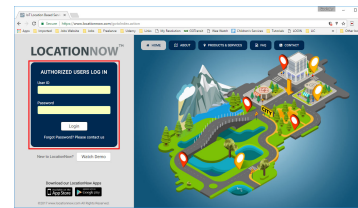


6. All done, check for GPS and GPRS fix.

Next turn the unit “ON”. Place it somewhere with an unobstructed view of the sky and wait for the “GPS” and “GPRS” lights to go solid.

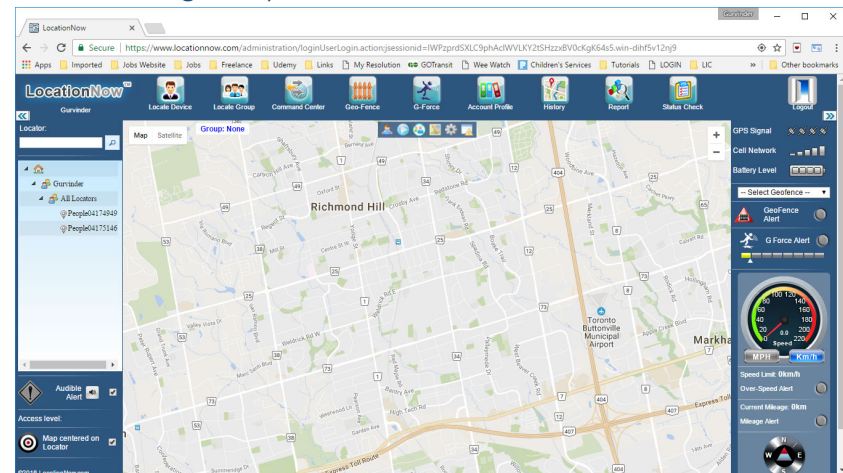
Accessing LocationNow.com

1. Login In: User ID and Password.



Now you need to enter your “User ID and Password”. Look for this information on your purchase invoice or email from Laipac. For technical support at any time, please email us at: tech@laipac.com

2. Making sure your unit is connected to the Dashboard.



Now, you are logged into LocationNow.com our web-based service. From here you can track and manage all of your units 24/7. Select any activated unit and click on “Locate Now”. Within a couple of seconds you will see your unit appear on the map and its updated information will appear to the left of the “Dashboard”.

3. Learning how to use LocationNow.com

To find out how LocationNow.com works, please visit:

<http://locationnow.com/locationnow/demo.htm>

If you have any further questions contact our customer service:

http://locationnow.com/locationnow/contact_us.jsp

Content

Knowing your S911 LolaPage1

Getting StartedPage1-2

- 1. Installing the Micro SIM card.
- 2. Charging the unit.
- 3. Installing the LocationNow Suite
- 4. Obtaining the correct drivers and connecting to your PC

Using the LocationNow Suite.....Page 2-3

- 1. Connecting S911 Lola to LocationNow Suite.
- 2. Updating the unit’s firmware.
- 3. Setting up the unit and its features.
- 4. All done, check for GPS and GPRS fix.

Accessing LocationNow.com.....Page 3

- 1. Login In: User ID and Password.
- 2. Making sure your unit is connected to the Dashboard.
- 3. Learning how to use LocationNow.com

Safety.....Page 4

Safety

The following guidelines are designed to prevent personal injury, loss or damage of property. Not following these guidelines can be dangerous or illegal.



Wireless devices can cause and be affected by interference. Performance is determined by signal strength and environmental factors.



Tampering or servicing the unit by any other than a qualified technician can lead to battery/unit damage or personal injury. Always use OEM accessories and services.



Do not handle while operating a motor vehicle if local laws prohibit the use of mobile devices while driving.



This device operates under similar principles as cellular devices. Follow all restrictions that may apply e.g. airplanes, hospitals, blasting areas, fuels, etc.



Do not expose to water. It could permanently damage the unit and will void warranty.