

Document No.: 251-UM-004

Document Type: User Manual

SF-Lite 201 Utility & Firmware Update

Version 2.3

Oct. 23, 2012



Copyright 2012 Laipac Technology Inc.

Release History

Revision	Date	Content
1.0	2011/10/18	It is initial release
1.1	2012/03/13	Update some description
2.0	2012/05/18	Introduction to firmware update by using new utility LaipacSuite
2.1	2012/08/20	Introduction to firmware update by using new utility Laipac Suite 20120817 (Beta version)
2.2	2012/10/02	Introduction to firmware update by using new utility LocationNow Suite 20120920 (Beta version)
2.3	2012/10/23	Introduction to firmware update by using new utility LocationNow Suite 20121019

Content

1. Introduction
2. How to start Firmware Update of your unit?
 - 2.1 Enter into Laipac Suite
 - 2.2 Action on SF-Lite (unit)
 - 2.3 If unit has been activated and not with the requested firmware
 - 2.4 If unit has not been activated
 - 2.5 If unit is with the requested firmware
3. Execution of Firmware Update
4. Is the unit with the desired firmware now?
5. Go back to Main Menu

1. Introduction

This manual guides user of Starfinder Lite 201 (SF-Lite 201) to update his/her unit's firmware by using new utility "**LocationNow Suite**"

"**LocationNow Suite**" is a stand-alone utility package for Laipac's GPS tracking products

Mainly, "**LocationNow Suite**" is able to provide the two functions below

- Configuration, which including "Express Setup" and "Expert Setup"
- Firmware Update

"**LocationNowSuite20121019**" is able to support "Expert Setup" and "Firmware Update" already.

As prerequisite of running this utility software, user should

- a. Have one set of Desktop or Laptop, which is running Microsoft Windows O.S.
- b. Uninstall the previous SF-Lite 201 utilities → "Laipac Platform BE" or "Laipac Suite"
- c. Completion of the installation of new utility package "**LocationNow Suite**"

For action **b** and **c** above, refer to another document, "**SF-Lite 201 Quick Start Manual V2.4**".

2. How to start Firmware Update of your unit?

2.1 Enter into LaipacSuite

There are 2 ways below to enter into LocationNowSuite utility's platform menu, see Fig. 5.1

- a. Double click icon "LocationNow Suite" on PC's desktop, or
- b. Go to Windows' Start → All Programs → LocationNow Suite → LocationNow Suite

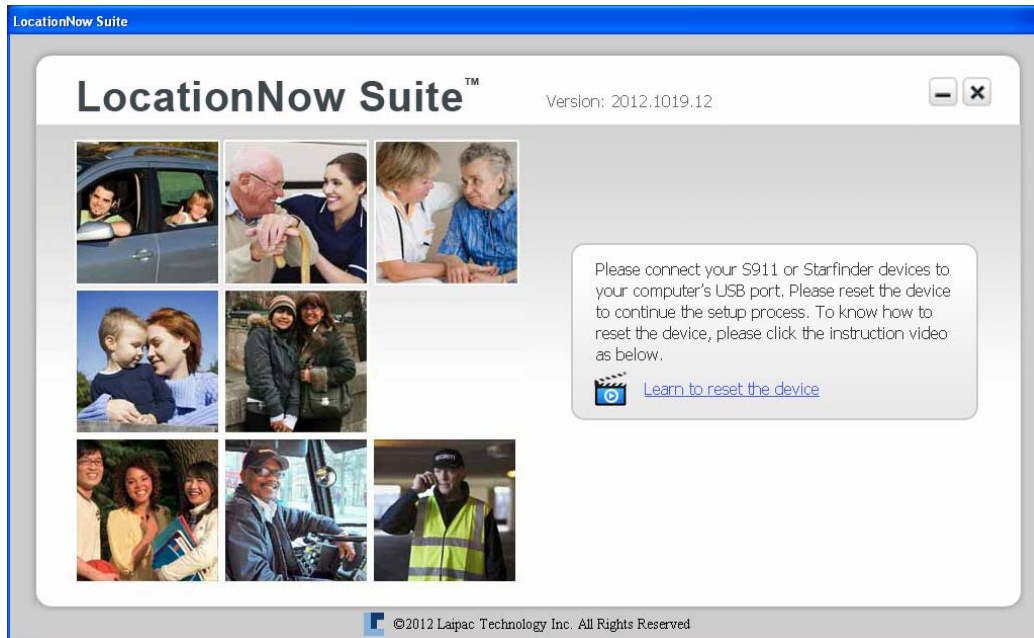


Fig. 2.1

2.2 Action on SF-Lite (unit)

- (1) Power on the unit with external DC 12V power supply
- (2) Connect SF-lite unit to PC by using mini USB cable
- (3) Reset unit by pressing its "reset" button.

2.3 If unit has been activated and not with the requested firmware

Under conditions below, user is able to see Main Menu, Fig. 2.3-1

- a. The connection between unit and utility is OK
- b. Unit has been activated, or unlocked.
- c. Unit is not with the firmware version requested by this utility. Such as, for utility package **LocationNowSuite20121019**, its requested firmware version is **V2.0.2**. However, currently, unit is with the previous version V1.28-EC

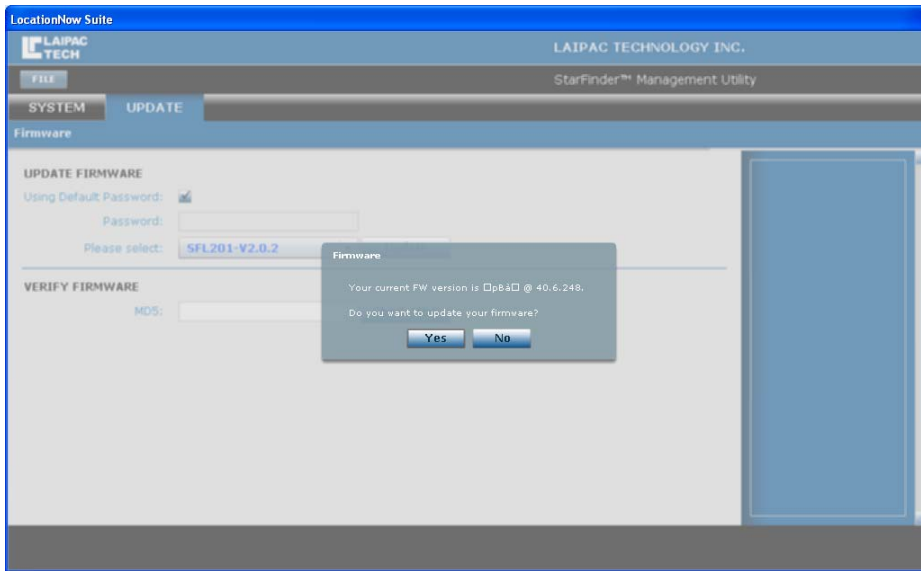


Fig. 2.3-1

User can click “Yes” button to enter into **Firmware Update** operation menu, see Fig. 2.3-2
For **Firmware Update** process, refer to section 3

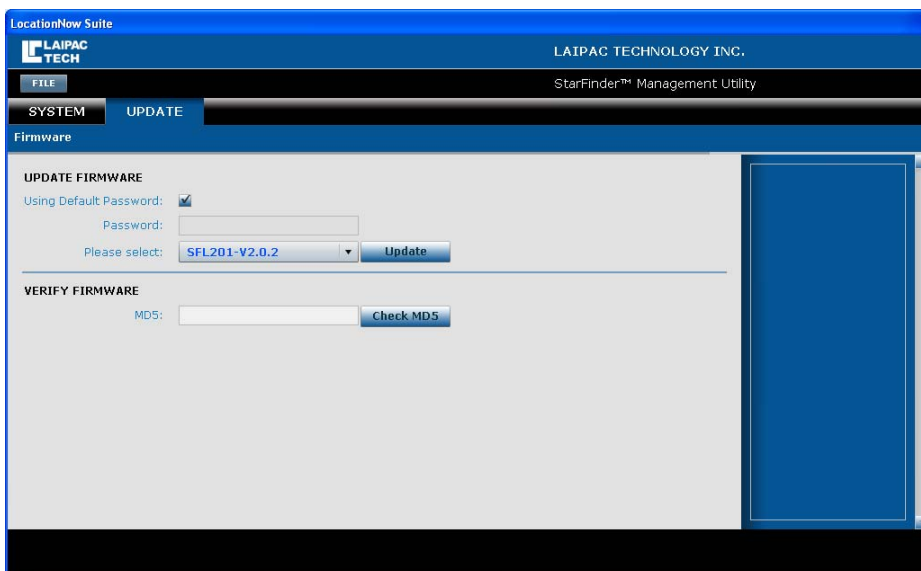


Fig. 2.3-2

2.4 If unit has not been activated

Under conditions below, user is able to see Fig. 2.4

- d. The connection between unit and utility is OK
- e. Unit has not been activated, or locked.

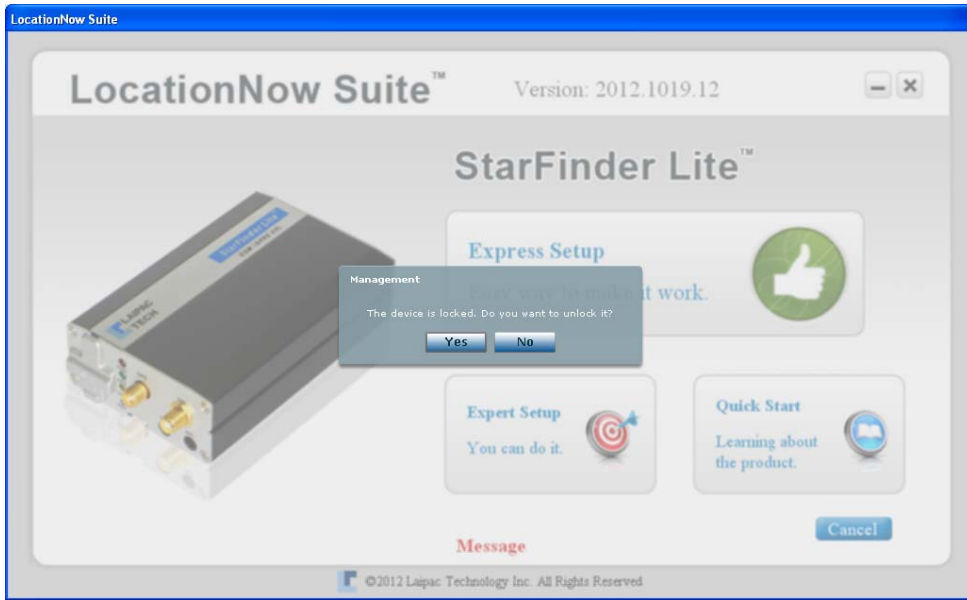


Fig. 2.4-1

Click “Yes” button, user will be brought into lock/un-lock operation interface Fig. 2.4-2

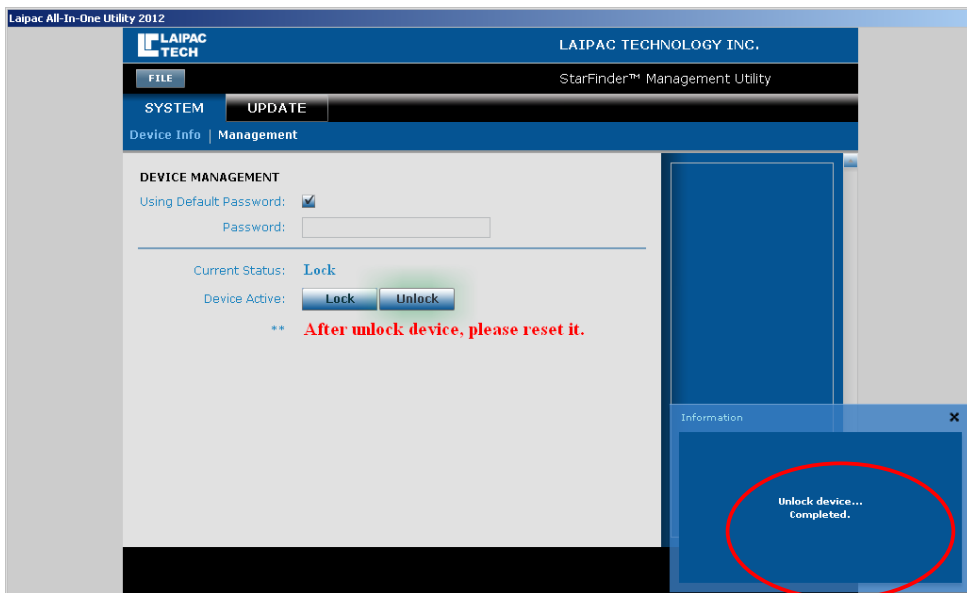


Fig. 2.4-2

User can click “**unlock**” button to activate this unit.

If unlock is completed, user can see a pop-on window on screen’s bottom right corner to show “**unlock device completed**”), see Fig. 2.4-2.

Then, reset the unit again. User can follow the instruction in section 2.3 or 2.5 to continue.

2.5 If unit is with the requested firmware

Under conditions below, user is able to see Fig. 2.5-1

- a. The connection between unit and utility is OK
- b. Unit has the firmware version requested by this utility. Such as, for utility package LocationNowSuite20121019, it requests firmware version is V2.0.2
- c. Unit has been activated (unlocked)

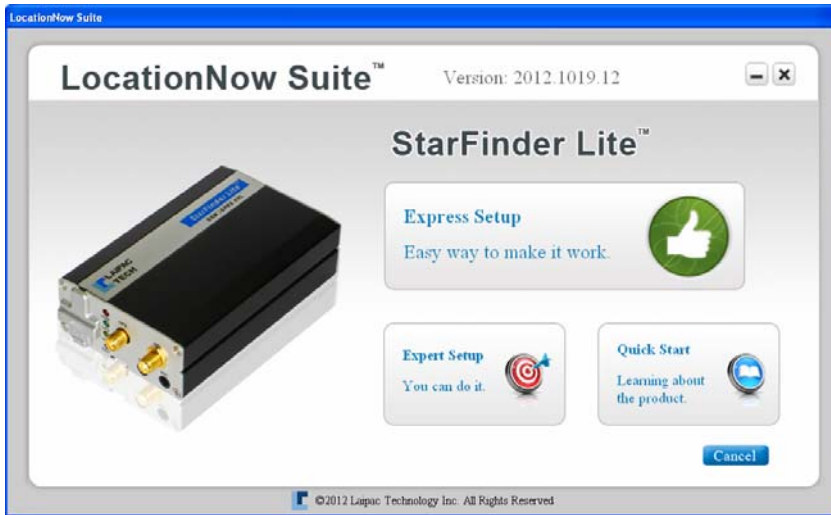


Fig. 2.5-1

User can click “Expert Setup” button to enter into Configuration Main Menu Fig. 2.5-2.

Or, wait a while, automatically, user will be brought into Configuration Main Menu Fig. 2.5-2.

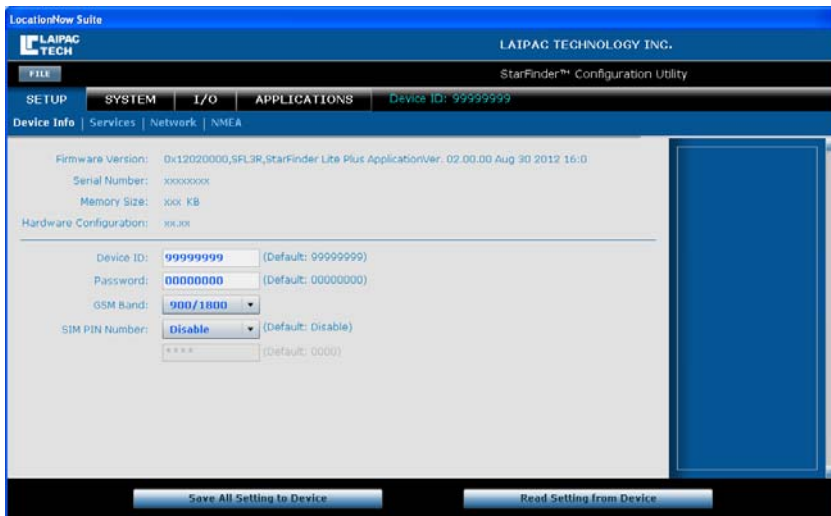


Fig. 2.5-2

For configuration of SF-Lite 201, refer to SF-Lite 201Utility Quick Start Manual V2.3.

3. Execution of Firmware Update

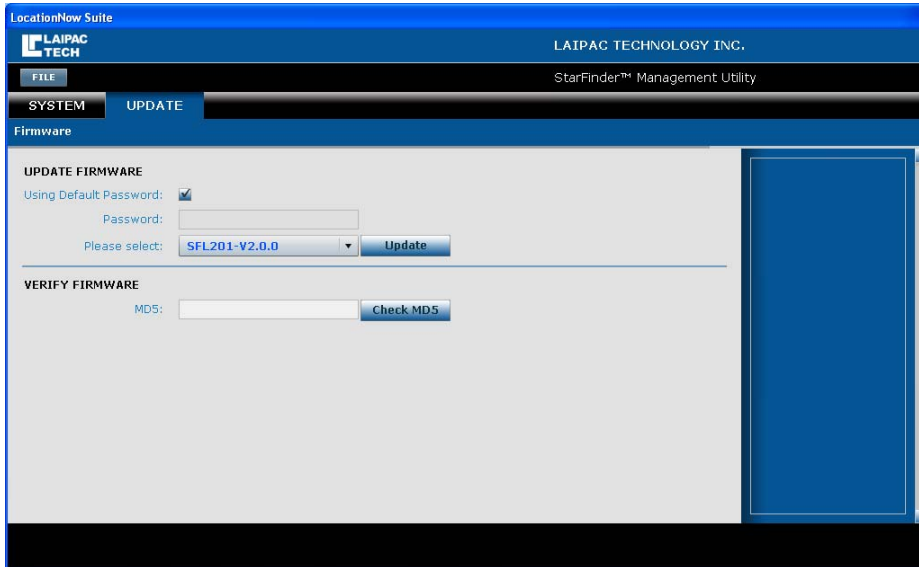


Fig. 3-1

Select the desired firmware version from the “Please select” item, such as, SFL201-V2.0.0, then, click “Update” button to initiate the “Firmware Update” procedure.

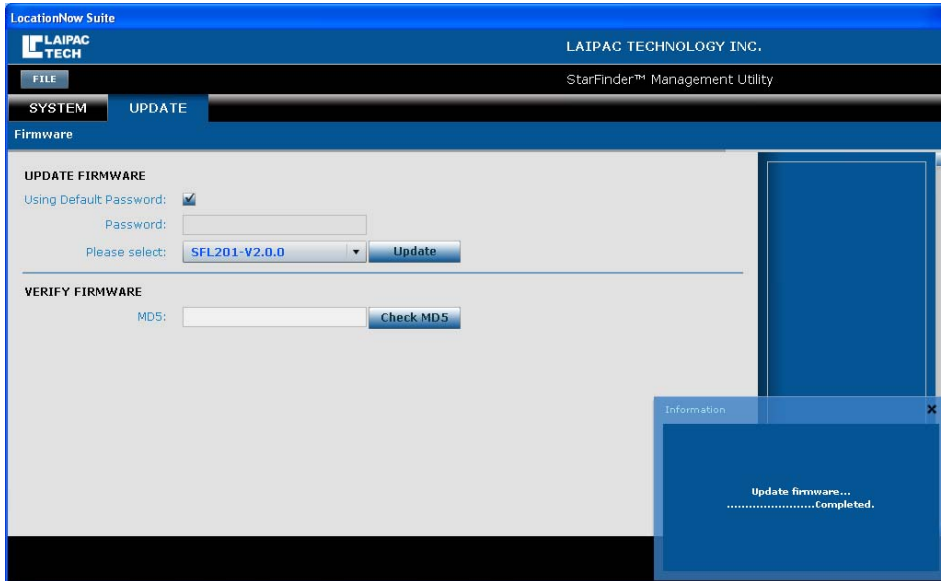


Fig 3-2

If updating procedure is successful, user will see a pop-up window shown on right bottom corner to indicate “**Update firmware completed**”

4. Is the unit with the desired firmware now?

Select “System→Firmware” sub menu, go to item “Device Information → Firmware Version”, click “Get” to check if the current firmware inside of unit is the one you want to have.

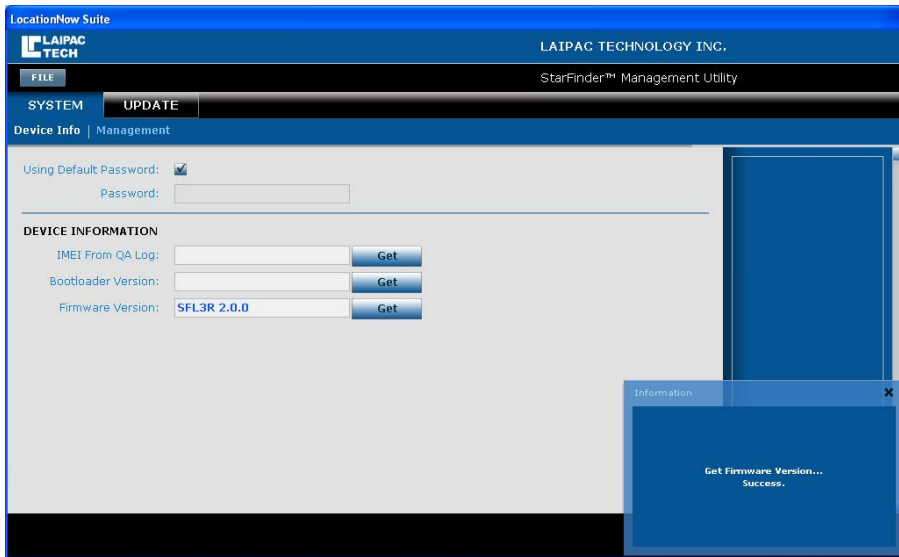


Fig. 4

5. Go back to Main Menu

Click “File→Logout”, utility will go back to **Main Menu**. See Fig. 5

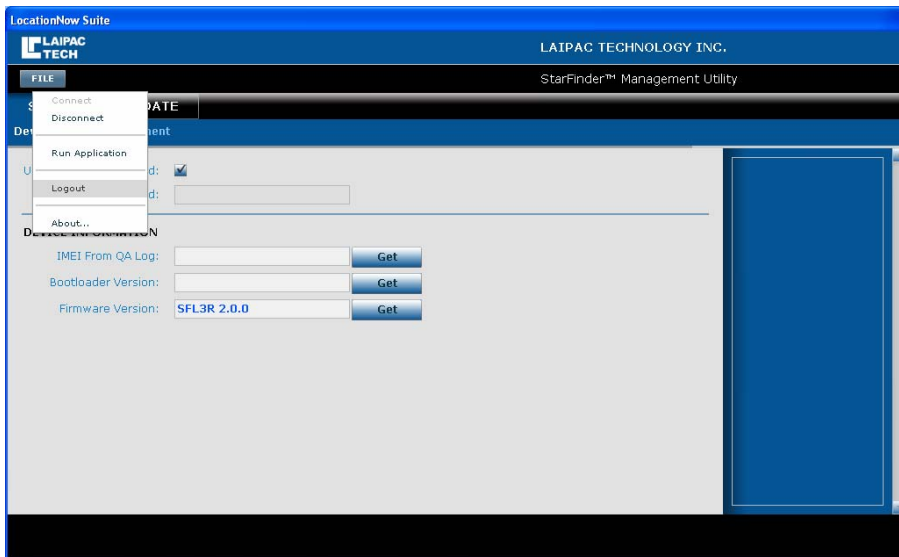


Fig. 5